

# HYDRAULIC HOSE

High Quality Textile, Wire Braided and Wire Sprial Hose for Industrial Applications



ALWAYS A RELIABLE PARTNER



ALWAYS A RELIABLE PARTNER

---

## We help you grow your rubber hose market.

---

From start to finish, we support our customers as a competent, reliable and experienced partner, actively contributing the know-how of an industrial company that has been successful in the market for over 20 years.





**HYDRAULIC HOSES**  
 WIRE BRAID | WIRE SPIRAL | TEXTILE BRAID  
 designed, manufactured and tested for each application

# CONTENT

## WIRE BRAID HOSE

EN853 1SN/SAE100 R1AT.....	6
EN853 2SN/SAE100 R2AT.....	6
EN857 1SC.....	7
EN857 2SC.....	7
H1SN.....	8
H2SN.....	8
L1SN.....	9
L2SN.....	9
SAE100 R5.....	10

## WIRE SPIRAL HOSE

EN856 4SP.....	12
EN856 4SH.....	12
SAE100 R12.....	13
SAE100 R13.....	13
SAE100 R15.....	14

## TEXTILE BRAID HOSE

EN854 1TE/SAE100 R6.....	16
EN854 2TE.....	16
EN854 3TE/SAE100 R3.....	17
SAE J20 R3.....	17
SAE J30 R6.....	18

## SPECIAL HOSE

SAE100 R14.....	20
-----------------	----

## HOSE PROTECTOR

JYM-A-A FIRE SLEEVE.....	22
JYM-A-B FIRE SLEEVE VCO.....	23
JYM-A-C-FIRE TAPE.....	24

JYM'S universal hose range meets the ISO, EN, SAE International Norms, while the extreme hose range is designed to meet special performance requirements in OEM severe applications.

Our clear dedication to expand our operations throughout the world, with the aim of strengthening our position as one of the leading manufacturers of steel-reinforced hydraulic hoses, combined with the well proven products and high level of service, make JYM a reliable partner for your current and future secure supply!

**JYM– ALWAYS A RELIABLE PARTNER!**



# WHAT CAN WE DO?

**Best Service.  
Best Value.  
Best Advice.**

The hydraulic hose range is dedicated to hydraulic systems and equipment in many different sectors, such as construction machines, mining, industrial processes, agriculture, road construction equipment, drilling, forestry machines, material handling and lifting, road transportation, marine and offshore, and many others. High pressure hydraulics is a means to transmit, control and distribute energy and power using a pressurised liquid, most often oil and water-based fluids, as a medium.

Please note that the suitability of a chosen product for the customer's specific application can only be determined in individual cases and is dependent on the specific installation situation (especially the hose curvature), the combination with a coupling, and the compatibility of the medium with the inner surface of the hose (inner liner).

**Additionally: not suitable for aerial vehicles**

Please note: Before using our products with new or untested media, or for applications that are not clearly indicated in the product information, written advice must be obtained from a specialist dealer or a Semperit application engineer. For safety reasons, all products must be inspected regularly for operational safety and replaced in the event of any damage (especially of the cover) or unusual signs of wear and tear. All products must be stored, handled and maintained in accordance with all our respective instructions and DIN 7716:1982. The information in our catalogue as well as each individual datasheet is subject to change at any time without notice since we are constantly developing and improving our products and due to constant technical developments after the latest release date of the catalogue and/or individual datasheets. In order to always have the latest product and safety information make sure you visit our website ([www.jymfg.com](http://www.jymfg.com)) regularly or contact one of our specialist dealers. All contracts with JYM are exclusively subject to our general terms and conditions (available at [www.jymfg.com](http://www.jymfg.com)).

Important notice: Our catalogue and any individual datasheet have been prepared with great care in order to provide you with all the information you need. The information contained therein is based on the state-of-the-art industrial technology and many years of experience and testing; whenever indicated for a certain product, we also confirm conformity with the resistance requirements of the media indicated in the product catalogue. However, the individual conditions of storage, maintenance and use decisively affect the safe and durable use of each product. The quality and safety of our products as indicated in the catalogue or individual datasheets are therefore strictly subject to the continuous observance of all specifications and restrictions in our written product information, applicable laws and standards. We reject any liability for safety issues or other consequences due to improper product choice, maintenance or handling (e.g. squashing, rupturing, stretching or filling with non-approved media). Our products must not be used in airplanes or other aerial vehicles under any circumstance. Unless specified otherwise, all hoses are manufactured according to EN853, 856, 857 and SAE J 517.

Publication date: August. 2019

## **IMPORTANT INFORMATION:**

Incorrect product selection or improper installation of hoses can result in damage to or failure of the hose, (often serious) material damage, and personal injury. Particularly in applications with high operational pressures, non-compliance with specifications can result in a serious risk of injury! Therefore, in case of doubt, please seek specific advice!

## **GENERAL INFORMATION ON THE USE OF OUR PRODUCTS**

Please consult our home page [www.jymfg.com](http://www.jymfg.com) for further information in detail. This brief overview does not replace specific advice in individual cases.

**Please obtain specific advice in the event of any uncertainty!**

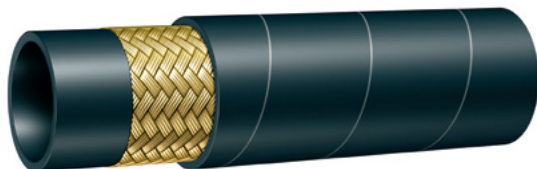
The number of potential operating hours decreases if the hose is used under unfavourable operating conditions. These include maximum operational pressure, maximum temperature, and minimum bending radius. When several of these factors coincide, the product deteriorates more rapidly and therefore must be replaced sooner.

Therefore please verify operating conditions regularly, and adapt your replacement cycle to them.



**WIRE BARID HOSE**

## EN853 1SN/SAE100 R1AT



**APPLICATION:**

Medium pressure hydraulic application including mobile, machine tool and agricultural application, using petroleum or water-based hydraulic fluids.

**TUBE:**

Oil resistant synthetic rubber.

**REINFORCEMENT:**

One high tensile steel wire braid.

**COVER:**

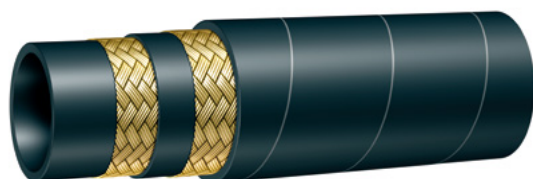
Abrasion and weather resistant synthetic rubber.

**TEMP. RANGE:**

-40°C to +100°C.

CODE	I.D.		O.D. mm	W.P.		B.P.		BEND RADIUS mm	WEIGHT kg/m
	inch	mm		bar	psi	bar	psi		
JYMR1001	3/16	4.8	11.5	250	3625	1000	14500	90	0.201
JYMR1002	1/4	6.4	12.7	225	3263	900	13050	100	0.244
JYMR1003	5/16	7.9	14.4	215	3118	860	12470	115	0.274
JYMR1004	3/8	9.5	16.5	180	2610	720	10440	130	0.363
JYMR1005	1/2	12.7	19.5	160	2320	640	9280	180	0.447
JYMR1006	5/8	15.9	23	130	1885	520	7540	200	0.539
JYMR1007	3/4	19.1	26.7	105	1523	420	6090	240	0.690
JYMR1008	1	25.4	34.5	87	1262	350	5046	300	0.987
JYMR1009	1 1/4	31.8	42.2	63	914	250	3654	420	1.205
JYMR1010	1 1/2	38.1	48.9	50	725	200	2900	500	1.405
JYMR1011	2	50.8	61.9	40	580	160	2320	630	1.910

## EN853 2SN/SAE100 R2AT



**APPLICATION:**

Medium pressure hydraulic application including mobile, machine tool and agricultural application, using petroleum or water-based hydraulic fluids.

**TUBE:**

Oil resistant synthetic rubber.

**REINFORCEMENT:**

One high tensile steel wire braid.

**COVER:**

Abrasion and weather resistant synthetic rubber.

**TEMP. RANGE:**

-40°C to +100°C.

CODE	I.D.		O.D. mm	W.P.		B.P.		BEND RADIUS mm	WEIGHT kg/m
	inch	mm		bar	psi	bar	psi		
JYMR2001	3/16	4.8	13.3	450	6525	1800	26100	90	0.325
JYMR2002	1/4	6.4	14.3	400	5800	1600	23200	100	0.384
JYMR2003	5/16	7.9	16.2	350	5075	1400	20300	115	0.460
JYMR2004	3/8	9.5	18.3	330	4785	1320	19140	130	0.551
JYMR2005	1/2	12.7	21.3	275	3988	1100	15950	180	0.667
JYMR2006	5/8	15.9	24.8	250	3625	1000	14500	200	0.822
JYMR2007	3/4	19.1	28.5	215	3118	860	12470	240	1.020
JYMR2008	1	25.4	36.3	165	2393	660	9570	300	1.380
JYMR2009	1 1/4	31.8	44.5	125	1813	500	7250	420	1.895
JYMR2010	1 1/2	38.1	52.6	90	1305	360	220	500	2.120
JYMR2011	2	50.8	65.6	80	1160	200	4640	630	2.765
JYMR2012	2 1/2	50.8	79.3	70	1015	280	4060	760	3.730

## EN857 1SC



**APPLICATION:**

High pressure service with tight bends for petroleum or water-based hydraulic fluids.

**TUBE:**

High Temperature, High Impact synthetic rubber.

**REINFORCEMENT:**

One high tensile steel wire braid.

**COVER:**

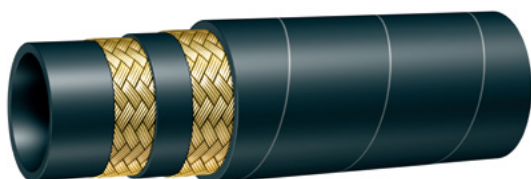
Abrasion and weather resistant synthetic rubber

**TEMP. RANGE:**

-40°C to +100°C.

CODE	I.D.		O.D. mm	W.P.		B.P.		BEND RADIUS mm	WEIGHT kg/m
	inch	mm		bar	psi	bar	psi		
JYM1SC001	1/4	6.4	11.7	225	3263	900	13050	45	0.172
JYM1SC002	5/16	7.9	13.4	215	3118	860	2470	55	0.197
JYM1SC003	3/8	9.5	15.1	180	2610	720	10440	65	0.240
JYM1SC004	1/2	12.7	18.1	160	2320	640	9280	90	0.296
JYM1SC005	5/8	15.9	22.2	130	1885	20	7540	100	0.400
JYM1SC006	3/4	19.1	25.4	105	1523	42	6090	150	0.474
JYM1SC007	1	25.4	33.1	88	1276	350	5100	210	0.702
JYM1SC008	1 1/4	31.8	41.5	75	1090	150	300	315	0.930

## EN857 2SC



**APPLICATION:**

High pressure service with tight bends for petroleum or water-based hydraulic fluids.

**TUBE:**

High Temperature, High Impact synthetic rubber

**REINFORCEMENT:**

Two high tensile steel wire braid.

**COVER:**

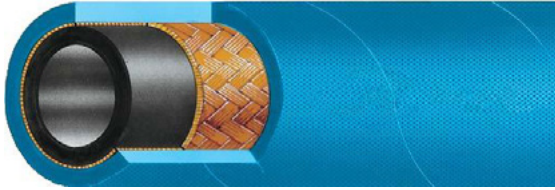
Abrasion and weather resistant synthetic rubber.

**TEMP. RANGE:**

-40°C to +100°C.

CODE	I.D.		O.D. mm	W.P.		B.P.		BEND RADIUS mm	WEIGHT kg/m
	inch	mm		bar	psi	bar	psi		
JYM2SC001	1/4	6.4	13.1	400	4280	1600	23200	75	0.280
JYM2SC002	5/16	7.9	14.8	350	3770	1400	20300	85	0.330
JYM2SC003	3/8	9.5	16.5	330	3335	1320	19140	90	0.420
JYM2SC004	1/2	12.7	19.5	275	2900	1100	15950	130	0.520
JYM2SC005	5/8	15.9	23.6	250	2175	1000	14500	170	0.610
JYM2SC006	3/4	19.1	26.8	215	1810	860	12470	200	0.790
JYM2SC007	1	25.4	34.5	165	1595	660	9570	250	1.100
JYM2SC008	1 1/4	31.8	43.4	150	2175	600	7250	335	1.500

## H1SN



**APPLICATION:**

Medium pressure hydraulic oil lines used in mobile, machine tool and agricultural application where higher temperature petroleum-or water based hydraulic fluids are a factor.

**Tube:**

Neoprene.

**REINFORCEMENT:**

One braid of high-tensile steel wire.

**COVER:**

Blue Synthetic Rubber.

**TEMP. RANGE:**

-40°C to +135°C.

**APPLICABLE STANDARDS:**

EN853 1SN, GB/T3683.1 1SN, SAE J517 R1S, ISO 1436 1SN

CODE	I.D.		O.D.	W.P.		B.P.		BEND RADIUS	WEIGHT
	inch	mm		bar	psi	bar	psi		
H1SN001	3/16	4.6	12.5	250	3630	1000	14520	90	0.19
H1SN002	1/4	6.2	14.1	225	3260	900	13040	100	0.23
H1SN003	5/16	7.7	15.7	215	3120	860	12480	115	0.27
H1SN004	3/8	9.3	18.1	180	2615	720	10460	125	0.34
H1SN005	1/2	12.3	21.4	160	2320	640	9280	180	0.43
H1SN006	5/8	15.5	24.5	130	1890	520	7560	205	0.51
H1SN007	3/4	18.6	28.5	105	1530	420	6120	240	0.66
H1SN008	1	25.0	36.6	87	1280	350	5120	300	1.00
H1SN009	1 1/4	31.4	44.8	62	910	250	3640	420	1.35
H1SN010	1 1/2	37.7	52.1	50	720	200	2880	500	1.56
H1SN011	2	50.4	65.5	40	580	160	2320	630	2.20

## H2SN



**APPLICATION:**

High pressure hydraulic oil lines used in mobile, machine tool and agricultural application where higher temperature petroleum-or water based hydraulic fluids are a factor.

**TUBE:**

Neoprene.

**REINFORCEMENT:**

Two braids of high-tensile steel wire.

**COVER:**

Blue Synthetic Rubber.

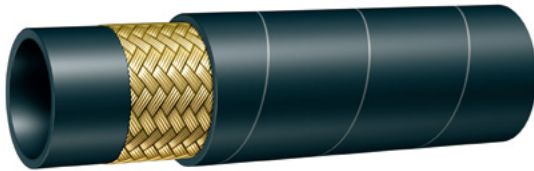
**TEMP. RANGE:**

-40°C to +135°C.

CODE	I.D.		O.D.	W.P.		B.P.		BEND RADIUS	WEIGHT
	inch	mm		bar	psi	bar	psi		
H2SN001	3/16	4.6	14.1	410	6020	1660	26100	90	0.27
H2SN002	1/4	6.2	15.7	400	5800	1600	23200	100	0.34
H2SN003	5/16	7.7	17.3	350	5080	1400	20300	115	0.39
H2SN004	3/8	9.3	19.7	330	4800	1320	19140	130	0.49
H2SN005	1/2	12.3	23.0	275	4000	1100	15950	180	0.59
H2SN006	5/8	15.5	26.2	250	3630	1000	14500	200	0.71
H2SN007	3/4	18.6	30.1	215	3120	860	12470	240	0.89
H2SN008	1	25	38.9	165	2400	660	9570	300	1.37
H2SN009	1 1/4	31.4	49.5	125	1820	500	7250	420	2.27
H2SN010	1 1/2	37.7	55.9	90	1310	360	220	500	2.44
H2SN011	2	50.4	68.6	80	1160	320	4640	630	3.00



## L1SN



**APPLICATION:**

High pressure hydraulic oil lines used in mobile, machine tool and agricultural application where higher temperature petroleum-or water based hydraulic fluids are a factor.

**TUBE:**

Nitrile.

**REINFORCEMENT:**

One braid of high-tensile steel wire.

**COVER:**

Black Neoprene Blend.

**TEMP. RANGE:**

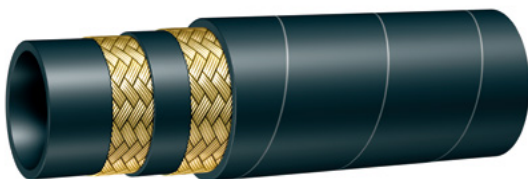
-50°C to +100°C.

**APPLICABLE STANDARDS:**

EN853 2SN, GB/T3683.1 2SN, SAE J517 R2S, ISO 1436 2SN

CODE	I.D.		O.D.	W.P.		B.P.		BEND RADIUS
	inch	mm	mm	bar	psi	bar	psi	mm
L1SN001	1/4	6.4	15.2	225	3265	900	13060	100
L1SN002	5/16	7.9	17.0	215	3120	850	12325	115
L1SN003	3/8	9.5	19.4	180	2610	720	10440	130
L1SN004	1/2	12.7	22.5	160	2320	640	9280	180
L1SN005	5/8	15.9	25.5	130	1885	520	7540	200
L1SN006	3/4	19.0	29.5	105	1525	420	6090	240
L1SN007	1	25.4	37.5	88	1275	350	5075	300
L1SN008	1 1/4	31.8	44.5	63	915	250	3625	420
L1SN009	1 1/2	38.1	51.0	50	725	200	2900	500
L1SN010	2	50.8	65.5	40	580	160	2320	630

## L2SN



**APPLICATION:**

High pressure hydraulic oil lines used in mobile, machine tool and agricultural application where higher temperature petroleum-or water based hydraulic fluids are a factor.

**TUBE:**

Nitrile.

**REINFORCEMENT:**

Two braids of high-tensile steel wire.

**COVER:**

Black Neoprene Blend.

**TEMP. RANGE:**

-50°C to +100°C.

**APPLICABLE STANDARDS:**

EN853 2SN, GB/T3683.1 2SN, SAE J517 R2S, ISO 1436 2SN

CODE	I.D.		O.D.	W.P.		B.P.		BEND RADIUS
	inch	mm	mm	bar	psi	bar	psi	mm
L2SN001	1/4	6.4	17.0	400	5800	1600	23200	100
L2SN002	5/16	7.9	18.5	350	5075	1400	20300	115
L2SN003	3/8	9.5	21.0	330	4785	1320	19140	125
L2SN004	1/2	12.7	24.0	270	3990	1100	15950	180
L2SN005	5/8	15.9	27.2	250	3625	1000	14500	200
L2SN006	3/4	19.0	31.3	215	3120	850	12325	240
L2SN007	1	25.4	39.0	165	2395	650	9425	300
L2SN008	1 1/4	31.8	49.5	125	1815	500	7250	420
L2SN009	1 1/2	38.1	57.0	90	1305	360	5220	500
L2SN010	2	50.8	68.5	80	1160	320	4640	630

## SAE100 R5



### APPLICATION:

Low-medium pressure lines, general purpose applications. Mineral oils, vegetable and rape seed oils, glycol and polyglycol based oils, synthetic ester based oils, oils in aqueous emulsion, water, diesel fuel (up to 93°C) .

### TUBE:

Oil resistant synthetic rubber.

### REINFORCEMENT:

One high tensile steel braid.

### COVER:

One textile braid.

### TEMP. RANGE:

-40°C to +100°C.

CODE	I.D.		O.D.	W.P.		B.P.		BEND RADIUS	WEIGHT
	inch	mm	mm	bar	psi	bar	psi	mm	kg/m
JYMR5001	3/16	5	13.2	210	3040	840	12180	75	0.220
JYMR5002	1/4	6	14.8	210	3040	840	12180	85	0.258
JYMR5003	5/16	8	17.1	157	2270	630	9130	100	0.310
JYMR5004	13/32	10	19.4	140	2030	560	8120	115	0.360
JYMR5005	1/2	12	23.3	122	1760	490	7100	140	0.485
JYMR5006	5/8	16	27.3	105	1520	420	6090	165	0.650
JYMR5007	7/8	22	31.2	56	810	224	3250	185	0.609
JYMR5008	1 1/8	29	38.0	43	625	175	2530	230	0.795
JYMR5009	1 3/8	35	44.3	35	500	140	2030	265	1.020
JYMR5010	1 13/16	46	56.1	24	350	98	1420	335	1.420
JYMR5011	2 3/8	60	75.0	24	350	98	1420	610	1.76



# WIRE SPIRAL HOSE

## EN856 4SP



**APPLICATION:**

Very high pressure application used for petroleum based hydraulic fluids

**TUBE:**

Oil resistant synthetic rubber.

**REINFORCEMENT:**

Four high tensile steel wire spiral layers

**COVER:**

Flame resistance synthetic rubber

**TEMP. RANGE:**

-40°C to +100°C.

CODE	I.D.		O.D.	W.P.		B.P.		BEND RADIUS	WEIGHT
	inch	mm	mm	bar	psi	bar	psi	mm	kg/m
JYM4SP001	1/4	6.4	18.1	450	6525	1800	26100	100	0.628
JYM4SP002	3/8	9.5	21.6	445	6453	1780	25810	110	0.800
JYM4SP003	1/2	12.7	24.8	415	6018	1660	24070	120	0.979
JYM4SP004	5/8	15.9	28.5	350	5075	1400	20300	140	1.273
JYM4SP005	3/4	19.1	32.5	350	5075	1400	20300	170	1.726
JYM4SP006	1	25.4	39	280	4060	1120	16240	340	2.324
JYM4SP007	1 1/4	31.8	49.2	210	3045	840	12180	460	3.266
JYM4SP008	1 1/2	38.1	57.2	185	2683	740	10730	560	3.894
JYM4SP009	2	50.8	69.8	165	2393	660	9570	660	5.233

## EN856 4SH



**APPLICATION:**

Very high pressure application used for petroleum based hydraulic fluids.

**TUBE:**

High Temperature, High Impact synthetic rubber

**REINFORCEMENT:**

Four high tensile steel wire spiral layers

**COVER:**

Abrasion and weather resistant synthetic rubber.

**TEMP. RANGE:**

-40°C to +120°C.

CODE	I.D.		O.D.	W.P.		B.P.		BEND RADIUS	WEIGHT
	inch	mm	mm	bar	psi	bar	psi	mm	kg/m
JYM4SH001	3/4	19.1	32.5	420	6090	1680	24360	210	1.498
JYM4SH002	1	25.4	39.5	380	5510	1520	22040	220	2.111
JYM4SH003	1 1/4	31.8	46.5	325	4713	1300	18850	420	2.525
JYM4SH004	1 1/2	38.1	53.5	290	4205	1160	16820	560	3.022
JYM4SH005	2	50.8	68	250	3625	1000	14500	700	4.627

## SAE100 R12



**APPLICATION:**

Very high pressure application used for petroleum based hydraulic fluids

**TUBE:**

High Temperature, High Impact synthetic rubber.

**REINFORCEMENT:**

Four high tensile steel wire spiral layers

**COVER:**

Abrasion and weather resistant synthetic rubber.

**TEMP. RANGE:**

-40°C to+120°C.

CODE	I.D.		O.D. mm	W.P.		B.P.		BEND RADIUS mm	WEIGHT kg/m
	inch	mm		bar	psi	bar	psi		
JYMR12001	3/8	9.5	21.6	280	4000	1120	16000	100	0.733
JYMR12002	1/2	12.7	24.8	280	4000	1120	16000	120	0.893
JYMR12003	5/8	15.9	27.6	280	4000	1120	16000	140	1.160
JYMR12004	3/4	19.1	30.9	280	4000	1120	16000	150	1.298
JYMR12005	1	25.4	39	280	4000	1120	16000	220	1.942
JYMR12006	1 1/4	32	47.5	210	3000	840	12000	250	2.523
JYMR12007	1 1/2	38	54	175	2500	700	10000	500	2.921
JYMR12008	2	51	68	175	2500	700	10000	630	4.627

## SAE100 R13



**APPLICATION:**

Very high pressure applications subject to surge or flexing such as construction equipments, mining and the high performance industrial market.

**TUBE:**

High Temperature, High Impact synthetic rubber

**REINFORCEMENT:**

Four or six high tensile steel wire spiral layers.

**COVER:**

Abrasion and weather resistant synthetic rubber.

**TEMP. RANGE:**

-40°C to+120°C.

CODE	I.D.		O.D. mm	W.P.		B.P.		BEND RADIUS mm	WEIGHT kg/m
	inch	mm		bar	psi	bar	psi		
JYMR13001	1/4	6.4	20.6	776	11250	3100	46500	127	0.930
JYMR13002	3/8	9.5	23.8	690	10000	2760	41400	152	1.100
JYMR13003	1/2	12.7	27	512	7500	2070	31000	200	1.350
JYMR13004	3/4	19.1	32	350	5075	1400	20000	240	1.650
JYMR13005	1	25.4	39.2	350	5075	1400	20000	300	2.250
JYMR13006	1 1/4	31.8	49.8	350	5075	1400	20000	420	3.600
JYMR13007	1 1/2	38	57.3	350	5075	1400	20000	500	4.750
JYMR13008	2	51	71.9	350	5075	1400	20000	630	6.900

## SAE100 R15



**APPLICATION:**

Very high pressure applications subject to surge or flexing such as construction equipments, mining and the high performance industrial market.

**TUBE:**

Cold weather and high temperature, high impact synthetic rubber

**REINFORCEMENT:**

Four or six high tensile steel wire spiral layers.

**COVER:**

Abrasion and weather resistant synthetic rubber.

**TEMP. RANGE:**

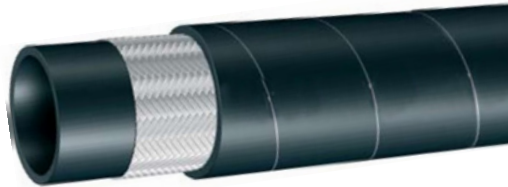
-55°C to +120°C.

CODE	I.D.		O.D. mm	W.P.		B.P.		BEND RADIUS mm	WEIGHT kg/m
	inch	mm		bar	psi	bar	psi		
JYMR15001	3/8	9.5	23.3	414	6000	1655	23990	153	0.770
JYMR15002	1/2	12.7	26.8	414	6000	1655	23990	203	0.920
JYMR15003	3/4	19.1	36.1	414	6000	1655	23990	267	1.500
JYMR15004	1	25.4	42.9	414	6000	1655	23990	330	2.100
JYMR15005	1 1/4	31.8	51.5	414	6000	1655	23990	445	3.600
JYMR15006	1 1/2	38	59.6	414	6000	1655	23990	533	5.100



# TEXTILE BRAID HOSE

## EN854 1TE/SAE100 R6



**APPLICATION:**

Low pressure lines, return lines, drain lines.  
Mineral oils, vegetable and rape seed oils, glycol and polyglycol based oils, synthetic ester based oils, oils in aqueous emulsion, water.

**TUBE:**

Oil resistant synthetic rubber.

**REINFORCEMENT:**

One high resistance synthetic rubber.

**COVER:**

Environment resistant synthetic rubber.

**TEMP. RANGE:**

-40°C to +121°C.

CODE	I.D.		O.D.	W.P.		B.P.		BEND RADIUS	WEIGHT
	inch	mm	mm	bar	psi	bar	psi	mm	kg/m
JYMR6001	3/16	5	11.0	35	500	140	2000	50	0.093
JYMR6002	1/4	6	12.6	28	400	112	1600	65	0.117
JYMR6003	5/16	8	14.1	28	400	112	1600	75	0.135
JYMR6004	3/8	10	15.8	28	400	112	1600	75	0.165
JYMR6005	1/2	12	19.4	28	400	112	1600	100	0.215
JYMR6006	5/8	16	23.0	24	350	96	1440	125	0.285
JYMR6007	3/4	19	26.0	21	300	84	1200	150	0.325
JYMR6008	1	25	32.0	17.5	250	75	1000	180	0.430

## EN854 2TE



**APPLICATION:**

Low pressure lines, return lines.  
Mineral oils, vegetable and rape seed oils, glycol and polyglycol based oils, synthetic ester based oils, oils in aqueous emulsion, water.

**TUBE:**

Oil resistant synthetic rubber.

**REINFORCEMENT:**

One high resistance synthetic rubber.

**COVER:**

Environment resistant synthetic rubber.

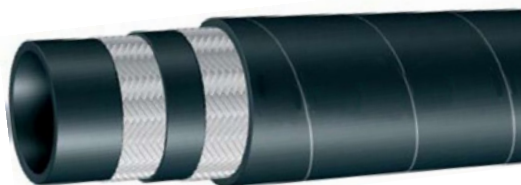
**TEMP. RANGE:**

-40°C to +125°C.

CODE	I.D.		O.D.	W.P.		B.P.		BEND RADIUS	WEIGHT
	inch	mm	mm	bar	psi	bar	psi	mm	kg/m
JYM2TE001	1/4	6	13.0	75	1080	300	4350	40	0.130
JYM2TE002	5/16	8	14.6	68	980	272	3940	50	0.145
JYM2TE003	3/8	10	16.1	63	910	252	3650	60	0.180
JYM2TE004	1/2	12	19.2	58	840	232	3360	70	0.220
JYM2TE005	5/8	16	23.6	50	720	200	2900	90	0.290
JYM2TE006	3/4	19	26.5	45	650	180	2610	110	0.365
JYM2TE007	1	25	33.4	40	580	160	2320	130	0.525
JYM2TE008	1 1/4	31	41.5	35	500	140	2030	140	0.695



## EN854 3TE/SAE100 R3



**APPLICATION:**

Medium pressure hydraulic applications, hoisting, hydraulic transmissi. Mineral and biological oils, ASTM 1, ASTM 3, polyglycol based oils, water, water oil emulsions.

**TUBE:**

Oil resistant synthetic rubber.

**REINFORCEMENT:**

Two high resistance textile braids.

**COVER:**

Environment resistant synthetic rubber.

CODE	I.D.		O.D.	W.P.		B.P.		BEND RADIUS	WEIGHT
	inch	mm		bar	psi	bar	psi		
JYM3TE001	3/16	5	13.5	160	2300	640	9200	40	0.160
JYM3TE002	1/4	6	14.5	145	2100	580	8400	45	0.180
JYM3TE003	5/16	8	16.8	130	1900	520	7600	55	0.270
JYM3TE004	3/8	10	18.2	110	1600	440	6400	70	0.230
JYM3TE005	1/2	12	21.5	93	1350	372	5400	85	0.290
JYM3TE006	5/8	16	25.6	80	1150	320	4600	105	0.385
JYM3TE007	3/4	19	28.8	70	1000	280	4000	130	0.450
JYM3TE008	1	25	35.4	55	800	220	3200	150	0.570
JYM3TE009	1 1/4	31	42.5	45	650	180	2600	190	0.730
JYM3TE010	1 1/2	38	49.4	40	580	160	2320	240	0.930
JYM3TE011	2	51	62.2	33	480	132	1960	300	1.300

## SAE J20 R3



**APPLICATION:**

Very high pressure application used for petroleum based hydraulic fluids

**TUBE:**

High Temperature, High Impact synthetic rubber.

**REINFORCEMENT:**

Four high tensile steel wire spiral layers

**COVER:**

Abrasion and weather resistant synthetic rubber.

**TEMP. RANGE:**

-40°C to +120°C.

CODE	I.D.		O.D.	W.P.		B.P.		BEND RADIUS	WEIGHT
	inch	mm		bar	psi	bar	psi		
JYMJ20001	3/16	5	11.2	4.3	62	17.2	250	40	0.110
JYMJ20002	1/4	6	13.0	4.3	62	17.2	250	45	0.130
JYMJ20003	5/16	8	15.0	4.3	62	17.2	250	65	0.160
JYMJ20004	3/8	10	18.0	4.3	62	17.2	250	80	0.175
JYMJ20005	1/2	13	21.0	4.3	62	17.2	250	100	0.235
JYMJ20006	5/8	16	24.0	4.3	62	17.2	250	160	0.320
JYMJ20007	3/4	19	27.0	3.5	50	13.8	200	190	0.470
JYMJ20008	1	25	34.0	3.1	45	12.1	180	250	0.525
JYMJ20009	1 1/4	32	41.0	3.1	45	12.1	180	320	0.695

**SAE J30 R6**



**APPLICATION:**

Push-on hose for low pressure lines, return lines, drain lines. Used in fuel system or in the crankcase of internal combustion engines in mobile (truck, bus, off-highway, vehicles), stationary and marine applications.

Mineral oils, vegetable and rape seed oils, glycol and polyglycol based oils, synthetic ester based oils, oils in aqueous emulsion, water, diesel fuel, gasoline.

**TUBE:**

Fuel and oil resistant synthetic rubber compound.

**REINFORCEMENT:**

One textile braid.

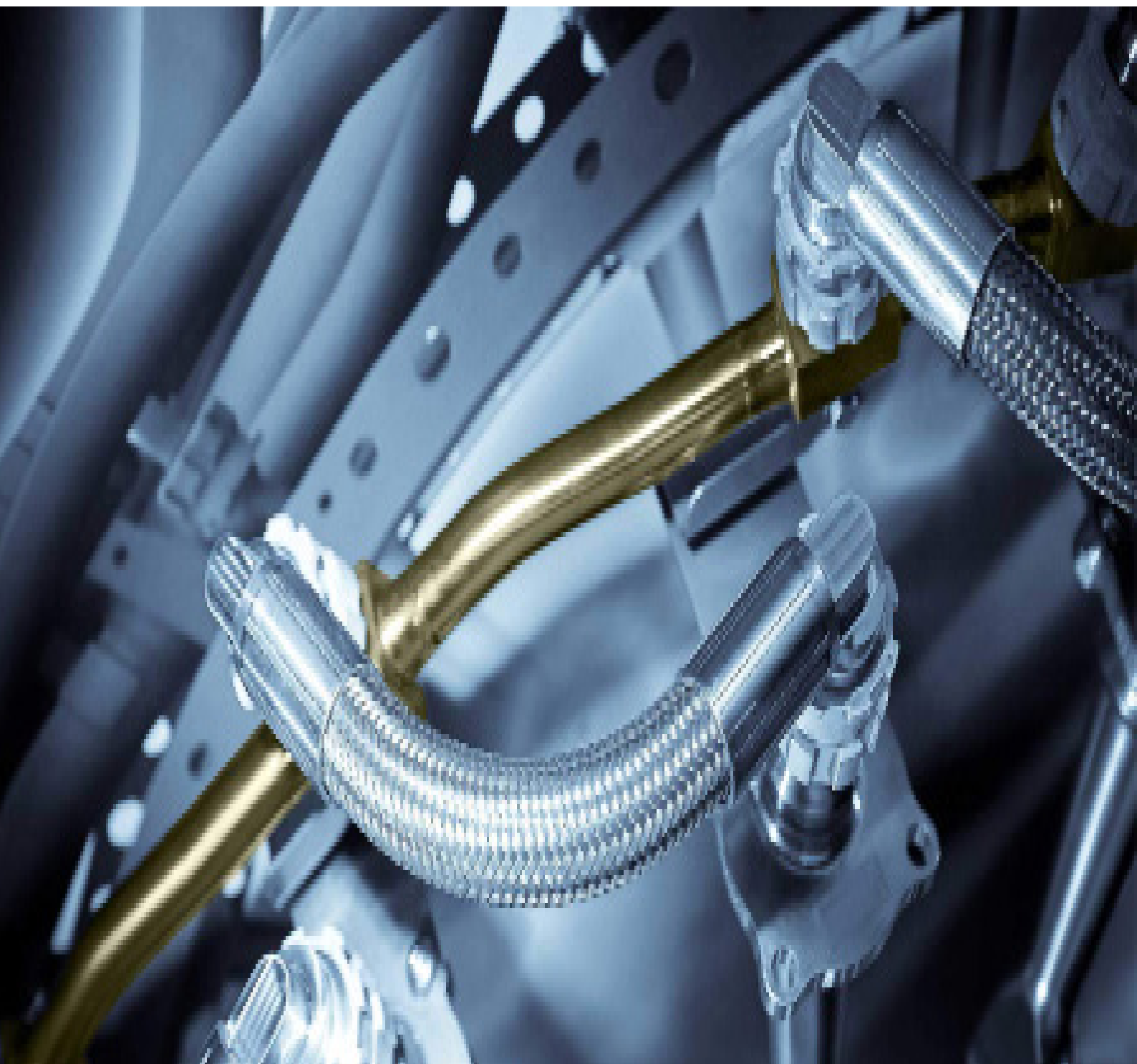
**COVER:**

Environment resistant synthetic rubber.

**TEMP. RANGE:**

-40°C to +100°C.

CODE	I.D.		O.D. mm	W.P.		B.P.		BEND RADIUS mm	WEIGHT kg/m
	inch	mm		bar	psi	bar	psi		
JYMJ30R6001	3/16	5	10.3	3.4	50	17.2	250	40	0.110
JYMJ30R6002	1/4	6	12.7	3.4	50	17.2	250	45	0.130
JYMJ30R6003	5/16	8	14.3	3.4	50	17.2	250	65	0.160
JYMJ30R6004	3/8	10	15.9	3.4	50	17.2	250	80	0.175
JYMJ30R6005	1/2	13	19.8	2.4	35	12	175	100	0.235
JYMJ30R6006	5/8	16	23.8	2.4	35	12	175	160	0.320
JYMJ30R6007	3/4	19	28.6	2.4	35	12	175	190	0.470
JYMJ30R6008	1	25	34.9	2.4	35	12	175	250	0.525
JYMJ30R6009	1 1/4	32	42.0	1.1	16	5.5	80	320	0.695
JYMJ30R6010	1 1/2	38	48.0	1.1	16	5.5	80	420	0.850
JYMJ30R6011	1 3/4	45	55.0	1.1	16	5.5	80	500	1.020
JYMJ30R6012	2	51	61.0	1.1	16	5.5	80	630	1.250



# **SPECIAL HYDRULIC HOSE**

## SAE100 R14



**APPLICATION:**

Petroleum base and synthetic base hydraulic fluids.

**TUBE:**

Polytetrafluorethylene.

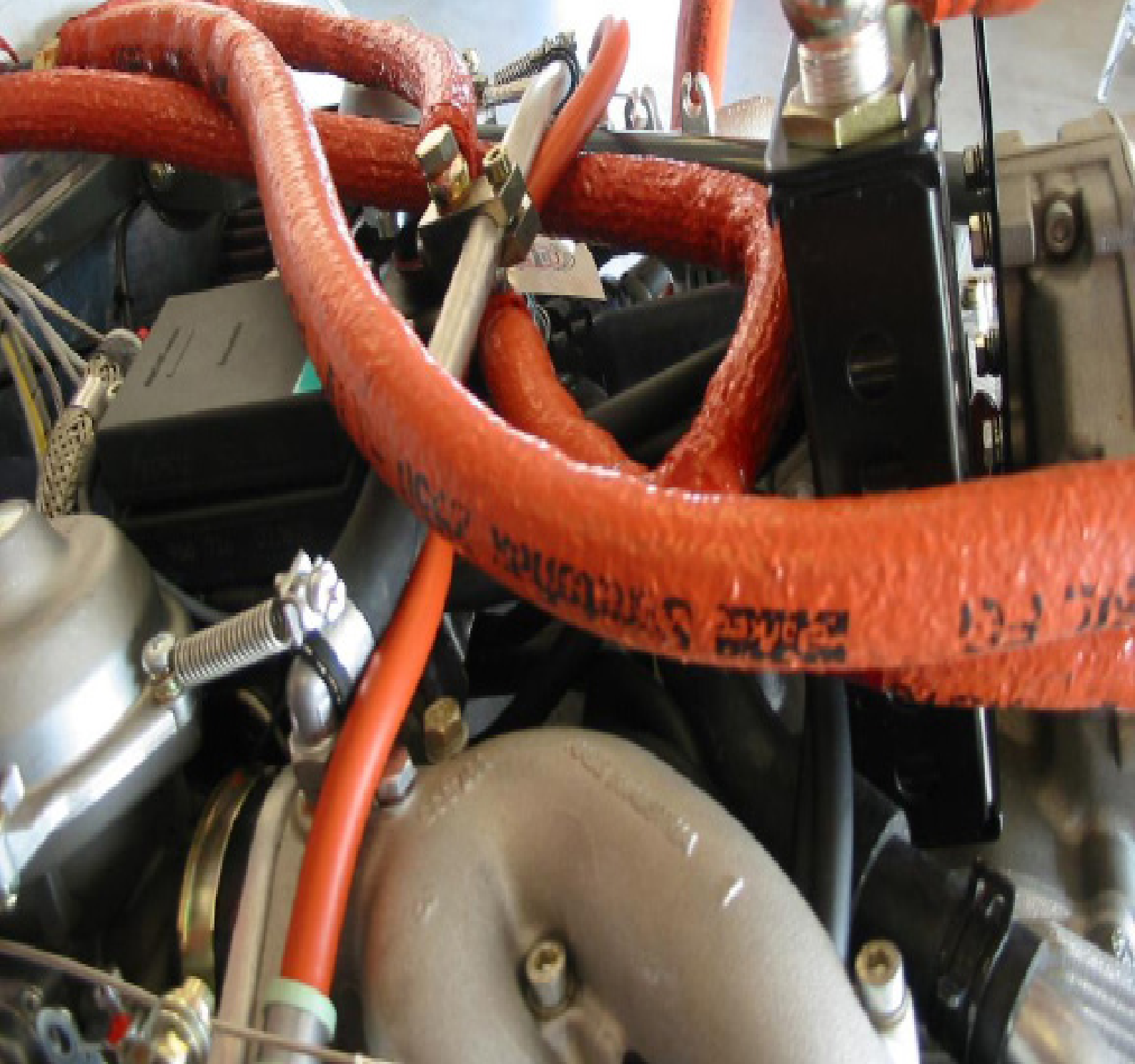
**COVER:**

One stainless steel wire braid.

**TEMP. RANGE:**

-54°C to +204°C.

CODE	I.D.		O.D.	W.P.		B.P.		BEND RADIUS	WEIGHT
	inch	mm	mm	bar	psi	bar	psi	mm	kg/m
JYMR14001	1/8	3	6.7	275	4000	1100	16000	25	0.060
JYMR14002	3/16	5	8.0	200	2900	800	11600	35	0.070
JYMR14003	1/4	6	9.5	175	2500	700	10000	45	0.090
JYMR14004	5/16	8	11.8	150	2200	600	8800	50	0.130
JYMR14005	3/8	10	14.1	135	2000	540	8000	55	0.150
JYMR14006	1/2	12	17.2	120	1750	480	7000	70	0.210
JYMR14007	5/8	16	20.5	100	1450	400	5800	130	0.260
JYMR14008	3/4	19	23.7	90	1300	360	5200	190	0.3210
JYMR14009	1	25	30.0	65	950	260	3800	270	0.450



# HOSE PROTECTOR

## JYM-A-A FIRE SLEEVE



### DESCRIPTION:

Fire Sleeve is ideal for protecting against high under bonnet temperatures which makes it perfect for use on hoses, wiring, oil and fuel lines. The Sleeve is made from woven insulated glass fiber braided sleeve that is heavily coated with 100% iron oxide silicone rubber.

The Sleeve can withstand up to 1650°C ambient heat and 560°C of direct continuous heat which makes it perfect for insulating wires, oil and fuel lines from under bonnet heat.

### SIZE:

The Sleeve diameter used can be same size as the hose that it will fit. For example if the hose is 10mm outside diameter use a 10mm inside diameter fire sleeve. The sleeve is flexible, it can give some slack in the Sleeve to allow it to be bent and installed/removed easily.

### KEY FEATURES:

1. Oil and water resistant
2. Can be shaped to fit the tightest bends
3. Includes fire tape to seal sleeve ends
4. Glass fiber sleeve with silicone rubber coating. Perfect for insulating wires, oil & fuel lines. Protects against dirt and road grime.
5. Withstands up to 1650°C ambient heat.
6. Withstands 560°C of direct continuous heat

CODE	I.D.		WALL THICKNESS	TOLERANCE	ROLL LENGTH	CTN SIZE	NO./CM	G.W.
	mm	inch						
JYM16001	Φ6	1/4	1.5	±0.15	50	47*47*10	100	7.2
JYM16002	Φ8	5/16	1.5	±0.15	50	47*47*10	100	8.5
JYM16003	Φ10	3/8	2	±0.20	25	47*47*10	100	11.5
JYM16004	Φ11	7/16	2	±0.20	25	47*47*10	100	12
JYM16005	Φ13	1/2	2	±0.20	25	47*47*10	100	12.5
JYM16006	Φ16	5/8	2	±0.20	25	47*47*10	50	11
JYM16007	Φ19	3/4	2	±0.20	25	47*47*10	50	14
JYM16008	Φ22	7/8	2	±0.20	25	47*47*10	50	15
JYM1609	Φ25	1	2	±0.30	25	47*47*10	50	16.5
JYM16010	Φ29	1 1/8	2	±0.30	25	47*47*10	50	20
JYM16011	Φ32	1 1/4	2	±0.30	25	47*47*10	50	22
JYM16012	Φ35	1 3/8	3	±0.30	25	47*47*15	50	24.5
JYM16013	Φ38	1 1/2	3	±0.30	25	47*47*15	50	26
JYM16014	Φ40	1 3/5	3	±0.30	25	47*47*15	50	28
JYM16015	Φ41	1 5/8	3	±0.30	25	47*47*15	50	28.5
JYM16016	Φ45	1 3/4	3	±0.30	25	47*47*15	50	34.3
JYM16017	Φ48	1 7/8	3	±0.30	25	47*47*15	50	35
JYM16018	Φ51	2	3	±0.35	25	52*52*20	50	36
JYM16019	Φ55	2 1/5	3.5	±0.35	50	52*52*20	50	38
JYM16020	Φ57	2 1/4	3.5	±0.35	50	52*52*20	50	38.8
JYM16021	Φ60	2 3/8	3.5	±0.35	20	52*52*20	20	20.2
JYM16022	Φ64	2 1/2	3.5	±0.35	20	52*52*20	20	21.5
JYM16023	Φ65	2 3/5	3.5	±0.35	20	52*52*20	20	21.8
JYM16024	Φ70	2 3/4	3.5	±0.40	20	52*52*20	20	23.5
JYM16025	Φ76	3	4	±0.40	20	52*52*20	20	25.8
JYM16026	Φ80	3 1/5	4	±0.40	20	52*52*20	20	28
JYM16027	Φ83	3 1/4	4	±0.40	20	52*52*20	20	28.5
JYM16028	Φ85	3 3/8	4	±0.40	20	52*52*20	20	30.5
JYM16029	Φ89	3 1/2	4	±0.50	20	52*52*20	20	32.2
JYM16030	Φ90	3 9/16	4	±0.50	20	52*52*20	20	33
JYM16031	Φ95	3 3/4	4	±0.50	20	52*52*20	20	34
JYM16032	Φ102	4	5	±0.50	10	52*52*20	10	18.5
JYM16033	Φ110	4 1/3	5	±0.50	10	54*54*20	10	20
JYM16034	Φ114	4 1/2	5	±0.50	10	54*54*20	10	22
JYM16035	Φ120	4 4/5	5	±0.50	10	54*54*20	10	24
JYM16036	Φ127	5	5	±0.60	10	54*54*20	10	26.8

## JYM-A-B FIRE SLEEVE



### DESCRIPTION:

Using high temperature glass fiber thread, Fire Wrap 3000 is flame resistant with a hook-and-loop Velcro edge closure design that is sewn internally for a simple and easy installation.

Fire Wrap 3000 withstands repeated exposures up to 1650°F and 560°F of direct continuous heat providing an excellent insulation barrier as well as protection against burns while working around engine bays.

### KEY FEATURES:

1. Hook-and-loop Velcro edge for easy install withstands harsh abrasions, hot oil spills & more
2. Water & oil resistant
3. Protect against hydraulic fluids, lubricating oil & most chemicals
4. Durable & flexible for tight bends

CODE	I.D.		WALL THICKNESS	TOLERANCE	ROLL LENGTH	CTN SIZE	NO./CM	G.W.
	mm	inch						
JYM17001	Φ6	1/4	1.5	±0.15	50	47*47*10	100	22
JYM17002	Φ8	5/16	1.5	±0.15	50	47*47*10	100	24.5
JYM17003	Φ10	3/8	2	±0.20	25	47*47*10	100	28
JYM17004	Φ11	7/16	2	±0.20	25	47*47*10	100	29.5
JYM17005	Φ13	1/2	2	±0.20	25	47*47*10	100	30.2
JYM17006	Φ16	5/8	2	±0.20	25	47*47*10	50	16.5
JYM17007	Φ19	3/4	2	±0.20	25	47*47*10	50	20.4
JYM17008	Φ22	7/8	2	±0.20	25	47*47*10	50	21.5
JYM17009	Φ25	1	2	±0.30	25	47*47*10	50	24.5
JYM17010	Φ29	1 1/8	2	±0.30	25	47*47*10	50	25.5
JYM17011	Φ32	1 1/4	2	±0.30	25	47*47*10	50	27.5
JYM17012	Φ35	1 3/8	3	±0.30	25	47*47*15	50	28.5
JYM17013	Φ38	1 1/2	3	±0.30	25	47*47*15	50	34
JYM17014	Φ40	1 3/5	3	±0.30	25	47*47*15	50	34.5
JYM17015	Φ41	1 5/8	3	±0.30	25	47*47*15	50	35
JYM17016	Φ45	1 3/4	3	±0.30	25	47*47*15	50	36
JYM17017	Φ48	1 7/8	3	±0.30	25	47*47*15	50	37
JYM17018	Φ51	2	3	±0.35	25	52*52*20	50	38.2
JYM17019	Φ55	2 1/5	3.5	±0.35	20	52*52*20	20	20.5
JYM17020	Φ57	2 1/4	3.5	±0.35	20	52*52*20	20	21
JYM17021	Φ60	2 3/8	3.5	±0.35	20	52*52*20	20	23.5
JYM17022	Φ64	2 1/2	3.5	±0.35	20	52*52*20	20	24
JYM17023	Φ65	2 3/5	3.5	±0.35	20	52*52*20	20	24.5
JYM17024	Φ70	2 3/4	3.5	±0.40	20	52*52*20	20	27.5
JYM17025	Φ76	3	4	±0.40	20	52*52*20	20	28.2
JYM17026	Φ80	3 1/5	4	±0.40	20	52*52*20	20	32.5
JYM17027	Φ83	3 1/4	4	±0.40	20	52*52*20	20	33.2
JYM17028	Φ85	3 3/8	4	±0.40	20	52*52*20	20	33.8
JYM17029	Φ89	3 1/2	4	±0.50	10	52*52*20	10	18.5
JYM17030	Φ90	3 9/16	4	±0.50	10	52*52*20	10	19
JYM17031	Φ95	3 3/4	4	±0.50	10	52*52*20	10	19.5
JYM17032	Φ102	4	5	±0.50	10	52*52*20	10	20.2
JYM17033	Φ110	4 1/3	5	±0.50	10	54*54*20	10	22
JYM17034	Φ114	4 1/2	5	±0.50	10	54*54*20	10	23.8
JYM17035	Φ120	4 4/5	5	±0.50	10	54*54*20	10	26.8
JYM17036	Φ127	5	5	±0.60	10	54*54*20	10	28.5

## JYM-A-C FIRE TAPE



### FEATURES:

High temperature tape:made from Silicone coated fiberglass braided fire sleeve

### PRODUCT FEATURE:

Material is same as fire sleeve:E-fiberglass braided inside and silicone coated outside the heat resistant performance can be same as high temperature fire sleeve. Suitable used in larger diameter of the tubes or place of complex lines.

### APPLICATION:

Widely used in metallurgical equipment, industrial machinery,electronic appliances,electric products of high temperature,such as place of heat and insulation protection

### WORKING TEMP.:

Can continuous exposure to the high temperature of 560℃,and from being damaged under the high temperature of 1650℃,can withstand 15-30 seconds

### WIDTH:

50-315mm

### LENGTH:

According to the site and customers requirements.

CODE	I.D.		WALL THICKNESS	TOLERANCE	ROLL LENGTH	CTN SIZE	NO./CM	G.W.
	mm	inch						
JYM18001	50	2	2	±0.20	25	47*47*10	50	11
JYM18002	60	2 1/3	2	±0.30	25	47*47*10	50	13.85
JYM18003	64	2 1/2	2	±0.30	25	47*47*10	50	14.5
JYM18004	76	3	2	±0.30	25	47*47*10	50	16
JYM18005	80	3 1/8	2	±0.30	25	47*47*10	50	16.5
JYM18006	95	3 3/4	2	±0.30	25	47*47*10	50	20
JYM18007	102	4	2	±0.30	25	47*47*10	50	21
JYM18008	114	4 1/2	3	±0.30	25	47*47*15	50	24.9
JYM18009	120	4 3/4	3	±0.30	25	47*47*15	50	28
JYM18010	127	5	3	±0.30	25	47*47*15	50	29
JYM18011	140	5 1/2	3	±0.30	25	47*47*15	50	34.3
JYM18012	152	6	3	±0.30	25	47*47*15	50	35.2
JYM18013	165	6 1/2	3	±0.35	25	52*52*20	50	36
JYM18014	178	7	3.5	±0.35	20	52*52*20	40	33
JYM18015	191	7 1/2	3.5	±0.35	20	52*52*20	20	20.2
JYM18016	200	7 7/8	3.5	±0.40	20	52*52*20	20	21
JYM18017	203	8	3.5	±0.40	20	52*52*20	20	21.8
JYM18018	220	8 3/4	3.5	±0.40	20	52*52*20	20	23.5
JYM18019	229	9	3.5	±0.40	20	52*52*20	20	24
JYM18020	241	9 1/2	4	±0.40	20	52*52*20	20	24.5
JYM18021	254	10	4	±0.40	20	52*52*20	20	28
JYM18022	267	10 1/2	4	±0.40	20	52*52*20	20	29
JYM18023	280	11	4	±0.50	20	52*52*20	20	33
JYM18024	300	11 4/5	4	±0.50	10	52*52*20	10	17.7
JYM18025	315	12 2/5	4	±0.50	10	52*52*20	10	18.5



**JINYUAN RUBBER MANUFACTURING LTD.**

No.177 Tailiu Road,Qingdao City,  
Shandong Province,China.

Tel: +86 532 80935980

Cell:+86 13256393632

Email:sales@goflexrubber.com



ALWAYS A RELIABLE PARTNER

---